



# Quick Start Guide

## databaseEZ

Get a bird's-eye-view of global database properties on a Domino server—fast.

Ytria databaseEZ lets you manage NSF properties with greater speed and precision. And its troubleshooting tools help you quickly find and fix database issues on your servers.



You can launch databaseEZ from Lotus Notes, Domino Designer, or Domino Administrator with this toolbar.

The **Databases** panel lists the databases on your server; tick checkboxes for the databases you wish to show in the main grid.

The **main grid** shows the databases on your server along with their properties.

The **Grid Data Composition** panel lets you choose which NSF properties to show in the main grid.

The screenshot shows the databaseEZ application window titled "Demo2/Demo2 - Ytria databaseEZ v10.1.0.7 - Demo2/Demo2". The interface includes a menu bar (Server, Edit, Panels, Search, Options, Tools, Help) and a "Databases" panel on the left with a tree view of server folders and databases. The main area is a "Property Analyzer Grid" displaying a table of 137 databases. The table has columns for Database Title, Logic..., Physic..., Template name, Allow soft del..., Space..., and DAOS. The "Grid Data Composition" panel on the right shows a list of tabs (Tab 1 - Database basics, Tab 2 - Info, Tab 4 - Design, Tab 6 - Full text, Tab 7 - Advanced) and various checkboxes for properties to display. At the bottom, the "Property Analyzer grid" shows a section for "Duplicate Replica IDs" with a table of database titles and filenames.

Database Title	Logic...	Physic...	Template name	Allow soft del...	Space ...	DAOS
designPropEZ 8...	15,990,784	15,990,784				98.39% Not En
Template signEZ...	16,777,216	16,777,216	YtriaTemplate_sign...			98.34% Not En
Notices Of Chan...	720,371,712	720,371,712				98.30% Not En
EZ Suite - Installa...	100,663,296	100,663,296				98.10% Not En
Mail (R6)	13,369,344	13,369,344	StdR6Mail			97.06% Not En
IBM Lotus Notes...	6,291,456	6,291,456				96.79% Not En
Domino Web Ac...	13,631,488	13,631,488	iNotes6			96.73% Not En
Extended Mail (R6)	13,893,632	13,893,632	ExtR6Mail			96.52% Not En
Lotus Domino D...	41,943,040	41,943,040				96.02% Not En
Lotus Notes 6.5.1...	9,699,328	9,699,328				96.01% Not En
Lotus Notes/Do...	663,552	663,552	Lotus Notes/Domi...			95.99% Not En
Domino Web Ser...	663,552	663,552	StdR5DominoWeb...			95.68% Not En
James Bates	18,350,080	18,350,080				95.27% Not En
iNotes6 Commo...	6,291,456	6,291,456				95.13% Not En
Lotus Domino A...	16,515,072	16,515,072				94.85% Not En
Domino Web Ad...	7,340,032	7,340,032	StdWebAdminData...			94.52% Not En
Process MP	6,815,744	6,815,744				94.04% Not En
Pete's Test db	2,621,440	2,621,440				93.44% Not En
Domino MailTra...	746,496	746,496	MailTrackerStore			93.28% Not En
Mister Admin	18,874,368	18,874,368	sdfadasd			93.07% Not En

The "Property Analyzer grid" shows a section for "Duplicate Replica IDs" with a table of database titles and filenames:

Database Title	Database Filename	Duplicate template n...	Duplicate Replic...	"Inherit from" set to n
Duplicate Replica IDs : 8525698B:004E50E1 (2)				
Microsoft Offi...	doclbm6.ntf		8525698B:004E50E1	
Phonebook (6)	phonebook.ntf		8525698B:004E50E1	
Duplicate Replica IDs : (135)				

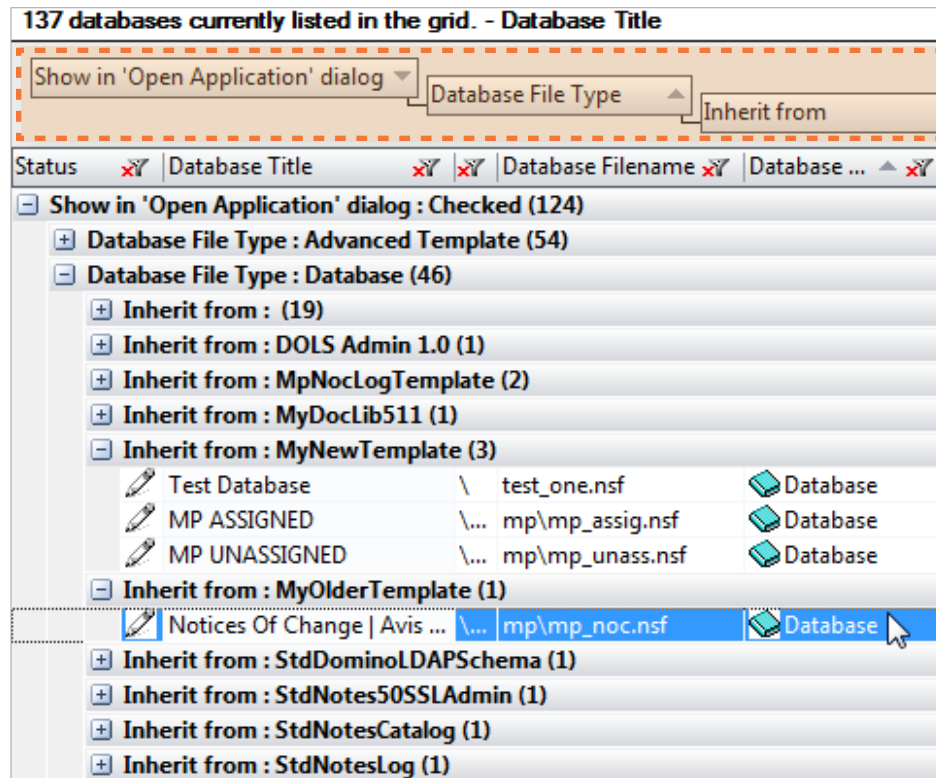
The **Output** panel (not shown) displays logs and errors.

The **Property Analyzer** grid displays the databases with issues or unusual properties. (e.g. duplicate Replica IDs)

# 1 With databaseEZ you can see and edit properties for all the databases on a server. Here's how:

**1.1 Analyze global NSF properties in a grid:** When you launch databaseEZ, you'll be prompted to choose a server. Once a server is selected, the left-hand panel (Databases) lets you click checkboxes for any or all databases to show their properties in the main grid.

1.1.1 Grouping by column headers: This example shows a multi-tiered grouping based on three NSF properties.

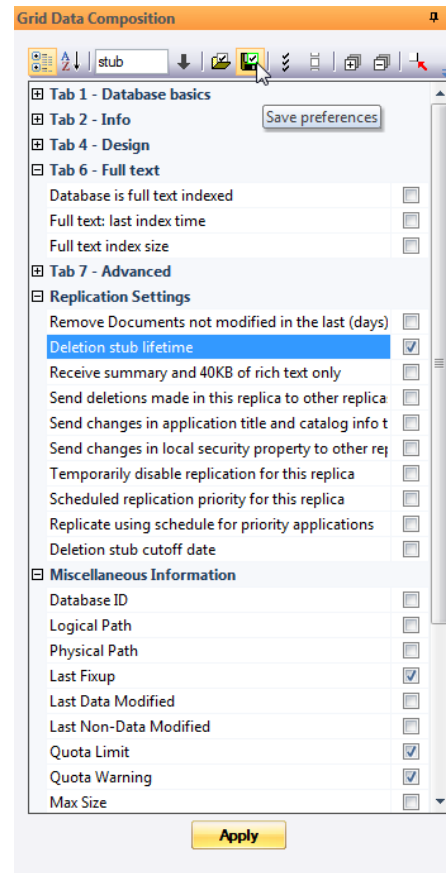


**1.1.1 Group, sort and filter global database properties:** In the main grid each database is represented as a row and each column shows a different NSF property. This grid interface lets you group by column headers or perform sorting / filtering operations.

Drag a column header here to group by that content.

	Replica ID	ODS ...	Template name	Inherit from	Allow soft del...	Use DAOS
8:27 ...	052569F1:005C...	R4 (20)	StdActivityTrends...	xcZCCx	<input type="checkbox"/>	<input type="checkbox"/>
0:57 ...	85257002:037A...	R5 (41)	StdR4AdminReque...	StdR4AdminR...	<input type="checkbox"/>	<input type="checkbox"/>
4:13 ...	852561D4:006B...	R4 (20)	StdR4AdminReque...		<input type="checkbox"/>	<input type="checkbox"/>
:10 P...	85256714:0072...	R5 (41)			<input type="checkbox"/>	<input type="checkbox"/>
1:7 P...	852561E2:003C...	R4 (20)	StdR4AgentLog		<input type="checkbox"/>	<input type="checkbox"/>
:03 P...	85256626:006B...	R4 (20)	StdR50ArchiveLog		<input type="checkbox"/>	<input type="checkbox"/>
20:5...	8525715A:007D...	R6 (43)			<input type="checkbox"/>	<input type="checkbox"/>
:17 P...	852561B7:0075...	R4 (20)	StdR4Billing		<input type="checkbox"/>	<input type="checkbox"/>
0:37 ...	85257002:0079...	R5 (41)			<input type="checkbox"/>	<input type="checkbox"/>
:44:...	85256832:003F...	R4 (20)	Bookmarks		<input type="checkbox"/>	<input type="checkbox"/>
7:14 ...	85257436:0055...	R6 (43)		BusyTime	<input type="checkbox"/>	<input type="checkbox"/>
41:0 ...	052562DF:001A...	R4 (20)	BusyTime		<input type="checkbox"/>	<input type="checkbox"/>

1.1.2 Summarized data: Yellow shading indicates properties retrieved using summarized data—they're shown nearly instantly.



1.1.2 See summarized data immediately or load complete information: When you first populate the grid, the majority of properties will be shown immediately—these are gathered using summarized data. What's more, the use of summarized data lets you see many properties for databases to which you have no access. To show the remaining properties, click **Ctrl+L** or **Edit>Load Complete Database Information**.

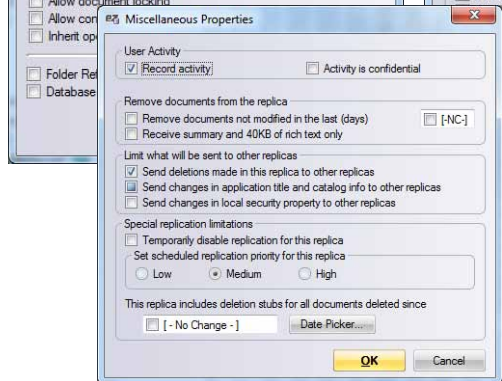
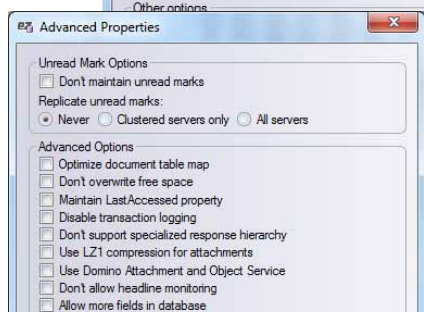
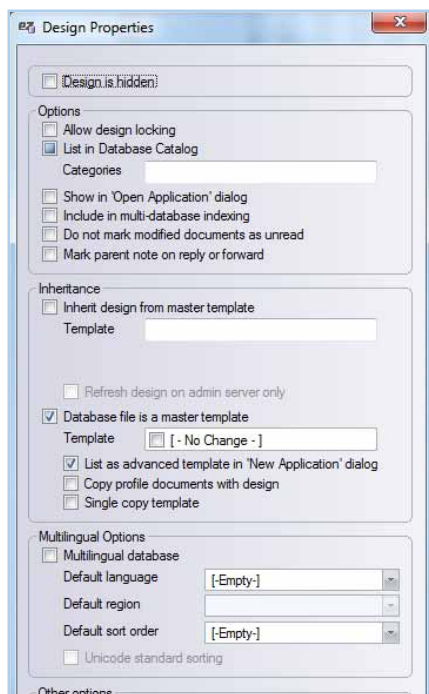
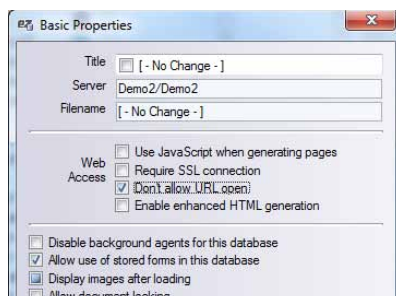
1.1.3 Choose the properties to analyze with the Grid Data Composition panel: Roughly 100 database properties can be shown in the main grid, but to make things more visually manageable, only 22 are shown by default. The Grid Data Composition panel lets you customize the properties shown in the grid, just tick the checkboxes then click 'Apply.' You can also save your preferences (or even multiple sets of preferences) in this panel.

1.1.3 The Grid Data Composition panel: Use checkboxes to choose the properties to show in the main grid.

# 2 With databaseEZ it's simple to mass-modify database properties. Here's how:

**2.1 Contextual menu options:** The right-click menu in databaseEZ offers numerous options for managing database properties either individually or en-masse, including the following:

**2.1.1 Edit Database Basic Properties:** This option lets you manage properties that correspond with the Basics tab of the Database properties dialog in Lotus Notes. (e.g. 'Don't allow URL open' and 'Disable background agents').

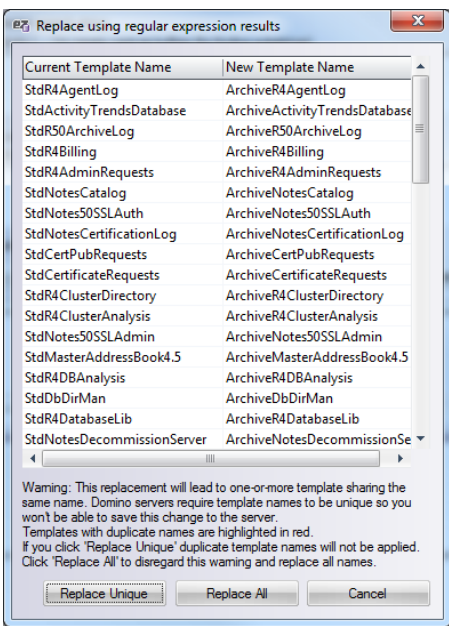


You can mass-edit global NSF properties, see 2.1.1 to 2.1.4 for more.

**2.1.2 Edit Database Design Properties:** This option lets you manage properties that correspond with the Database Design tab of the Database properties dialog in Lotus Notes. (e.g. 'Show in Open Application dialog' and 'Template name').

**2.1.3 Edit Database Advanced Properties:** This option lets you manage properties that correspond with the Advanced tab of the Database properties dialog in Lotus Notes. (e.g. 'Don't maintain unread marks' and 'Allow soft deletions').

**2.1.4 Edit Database Miscellaneous Properties:** This option lets you manage properties related to User Activity and Replication Settings. (e.g. 'Record user activity' and 'Temporarily disable replication').



**Note:** Databases changed in the grid are marked with a 'pencil' icon. However, changes won't be written to the server until you click **Server>Apply Changes (Ctrl+S)** or **Right-Click>Apply Changes to Selected**.

**Modified**

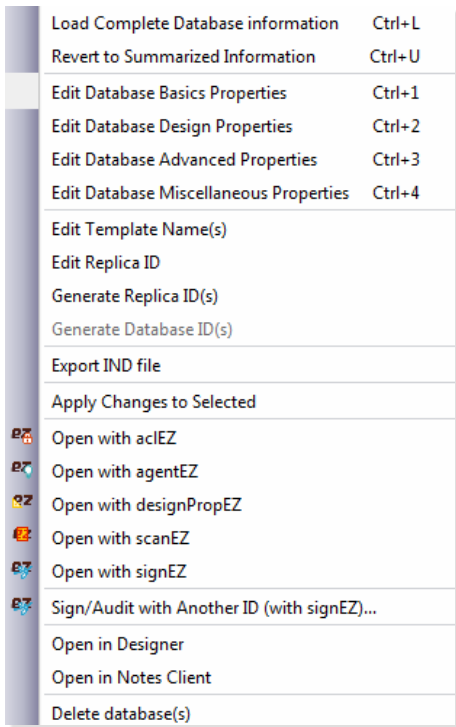
Also, some properties require that you perform a compact operation after editing (i.e. "Don't Maintain unread marks"; "Optimize Document Table Map"; "Quota Limit"; "Don't support specialized response hierarchy"; and "Compress database design"). If the compact step is omitted, changes won't be applied.

**2.1.5 Edit Replia ID/ Generate Replica ID(s):** You can right-click any database in the grid to change its Replica ID. You can also right-click multiple selected databases and generate new replica IDs for them.

**2.1.6 Export IND File:** This allows you to export an IND file with the names of all the databases currently selected in the grid.

**2.1.7 Open with...acIEZ/agentEZ/designPropEZ/scanEZ/signEZ:** These options let you open selected databases in other Ytria tools.

**Note:** Like all Ytria software, databaseEZ is fully compliant with Lotus Notes security. You must have sufficient access in order to make changes to databases.



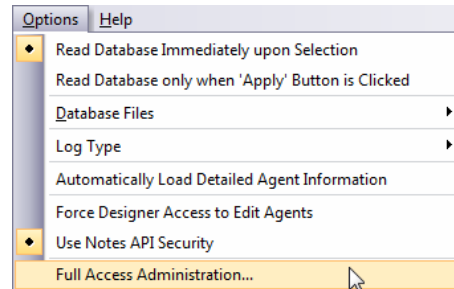
The right-click menu in databaseEZ's main grid.

**2.1.8 Sign/Audit with Another ID (with signEZ):** This lets you directly sign or audit the design elements for any selected database. This option requires that you also own Ytria signEZ.

**2.1.9 Open in Designer/Open in Notes Client:** These options allow you to open selected databases in either the Notes client or Domino Designer.

**2.1.10 Delete database(s):** You can use this to delete any databases you have selected in the grid.

**2.2 Full Access Administration:** Like all other Ytria tools, databaseEZ supports Full Access Administration. If you're listed as a Full Access Administrator on the server you can enable (or disable) this feature by clicking **Options>Full Access Administration**.



## 3 With databaseEZ you can scan a server for issues or aberrations, here's how:

**3.1 The Serverwide Property Analyzer:** This utility lets you find databases with unusual or problematic properties; to launch it, click **Tools>Property Analyzer**. The following property analysis options are available:

**3.1.1 Template name duplicates:** This will flag any identical template names.

**3.1.2 Replica ID duplicates:** This will find databases that share the same Replica ID.

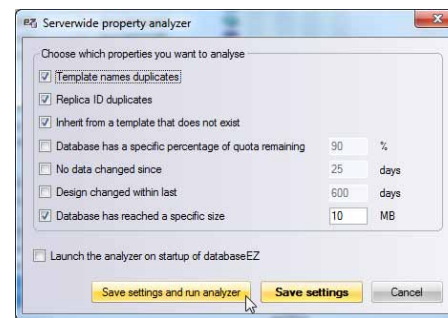
**3.1.3 Inherits from a template that does not exist:** This will reveal databases that are set to inherit from a nonexistent template.

**3.1.4 Database has a specific percentage of quota remaining (%):** This will reveal all databases that have reached or exceeded a given percentage of their size quota.

**3.1.5 No data change since n days:** Shows any databases where document data has not changed since before the given number of days.

**3.1.6 Design changed within last n days:** Shows database where the design has changed within the number of days given.

**3.1.7 Database has reached a specific size:** Displays databases that match or exceed the size given.

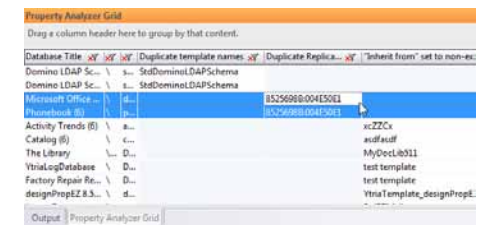


**3.1 The Serverwide Property Analyzer dialog:** You can scan a Domino server for databases that meet the conditions entered here.

**3.1.8 Launch Analyzer on startup of databaseEZ:** By checking this option the Property Analyzer dialog will appear each time you open databaseEZ.

**3.1.9 Save Settings and Run Analyzer:** This performs the Property Analyzer scan on all databases shown in the grid and also saves your settings.

**3.1.10 Save Settings:** Saves property settings for the next time you open the Property Analyzer.



**3.2 The Property Analyzer Results grid:** Databases found using a Serverwide Property Analyzer scan are shown in this grid.

**3.2 Property Analyzer grid results:** If you click **Save Settings and Run Analyzer**, any databases that match the entered criteria will appear in the Property Analyzer grid at the bottom of the databaseEZ window. From here you can group, sort or filter column headers. You can also right-click databases to select them in the main grid.